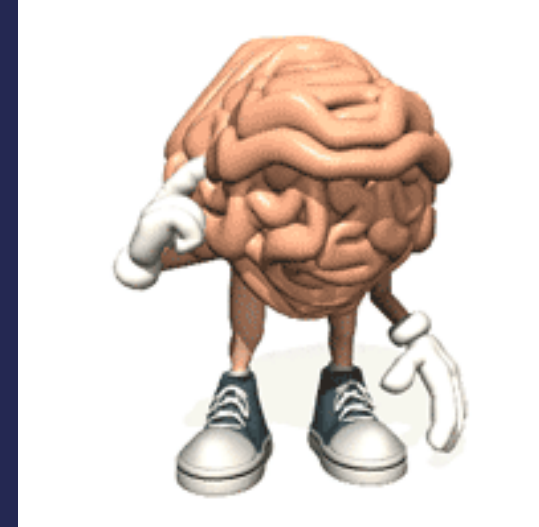


24/06/2024

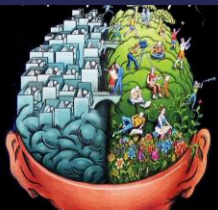


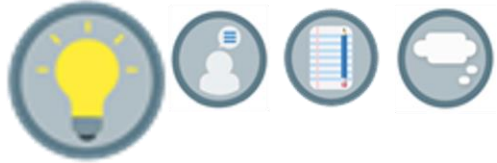
Post 16 Induction Day

Welcome to Psychology



A-Level Psychology
Miss Finnie- Teacher of Social Sciences

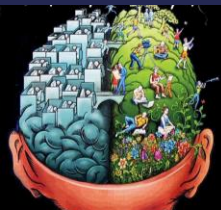




24/06/2024

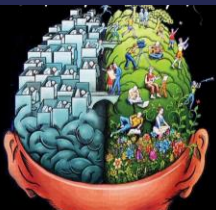
TPS: What is Psychology?

Discuss your ideas with the person sitting beside you





24/06/2024





24/06/2024



Basically, Psychology is the scientific study of the mind and behaviour

But what is behaviour?

Behaviour refers to any observable action made by a living person or animal. It is best described as any kind of response that can actually be seen and measured. It does not mean actions or attitudes that can be inferred.



What is the Mind?

Refers to experiences or the mental processes and experiences that cannot be directly observed.

- any response that is internal or hidden from view and cannot be directly observed

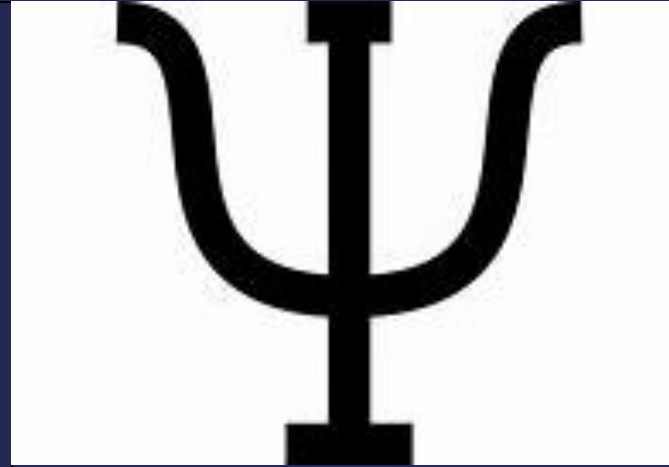
Psychology relies on inferences, or assumptions, about underlying processes on the basis of observable behaviour.



Origins/Etymology

Definition

'the scientific study of the human mind and its functions, especially those affecting behaviour in a given context.'



From

1650s, "the study of the soul," from Modern Latin *psychologia*, probably coined mid-16c. in Germany by Melanchthon from Latinized form of Greek *psychē* "breath, spirit, soul" (see [psyche](#)) + *logia* "study of" (see [-logy](#))

Word Family

Psychologies

Psych

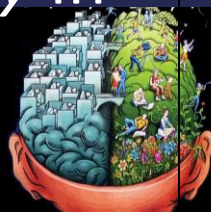
Psychologist

Psychological

Psychology

Examples

'She studied *psychology* in college'



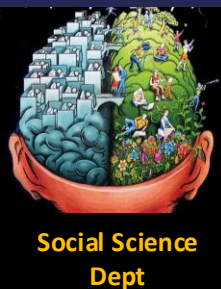


How do we explain behaviour?

24/06/2024



- In pairs, choose a piece of behaviour and try to explain it. E.g Laughing, spitting, humming etc
- An approach is a point of view in psychology. The approaches suggest different things are most influential in human behaviour.
- There are 6 main approaches we look at:
 - Biological approach & Evolutionary approach
 - Cognitive approach
 - Behavioural approach
 - Social Learning theory
 - Psychodynamic approach
 - Humanistic approach



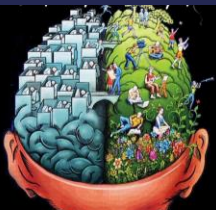


ABOUT THIS COURSE

24/06/2024



	Ms Nick Bennett	Miss Laura Finnie
Psychology Yr 12	Research methods [yr. 12 content] Biopsychology [yr. 12 content] Issues and Debates throughout	Approaches in psychology [yr. 12 & yr. 13 content] Issues and Debates Memory Attachment Psychopathology
Psychology Yr 13	Biopsychology [yr. 13 content] Research Methods [yr. 13 Content]	Social Influence Schizophrenia Forensic Psychology Gender



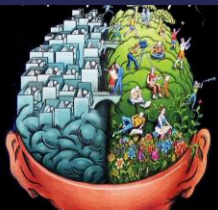


What does it mean for students to *think* like a Psychologist?

24/06/2024



- Never assume anything
- There is more than one correct answer
- Be objective
- Think outside the box, and use your imagination
- Consider individual differences
- Follow the evidence
- Challenge the evidence



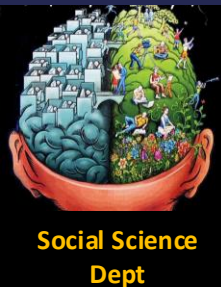


What does it mean for students to *talk* like a Social Scientist?

24/06/2024



- Ask questions
- Ask even more questions
- Use specialist vocabulary
- Be objective
- Use evidence
- Don't stereotype
- Don't use discriminatory language



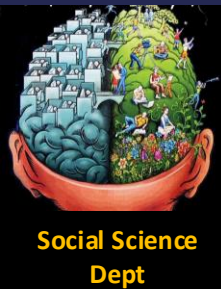


What can YOU do to enhance your course?

24/06/2024



- Read, read and then read a bit more
- Download a news app like the Guardian and set notifications
- Read the Social Science Newsletter for current watches and reads which will enhance your knowledge
- Ask for recommendations for things to read/watch
- Join in with extra curricular activities and clubs, the Social Science Department put on



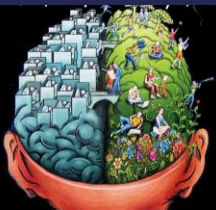


Practice

24/06/2024

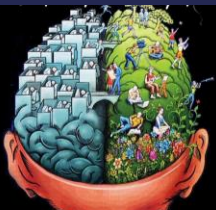


Let's test your memory!



TASK

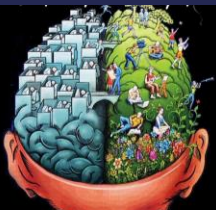
Try remembering the following string of letters. You have **10 seconds**.



TASK

Try remembering the following string of letters. You have **10 seconds**.

Y E B N O I P D T A L G R C U



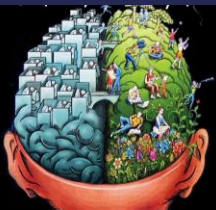
Chunking

24/06/2024



TASK

Try remembering the following string of letters. You have **10 seconds**.

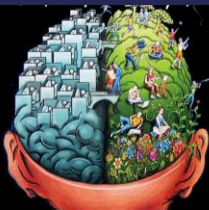


Instructions

- 1 point for every correct number.
- Numbers must be in the correct order.

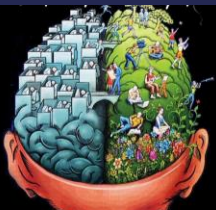
Check your letters

Y E B N O I P D T A L G R C U



TASK

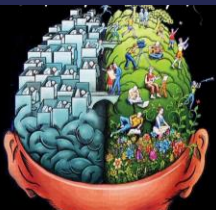
Try remembering the following string of letters. You have **10 seconds**.



TASK

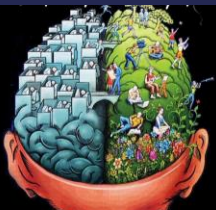
Try remembering the following string of letters. You have **10 seconds**.

D A T N O L P I B R E Y C U G



TASK

Try remembering the following string of letters. You have **10 seconds**.

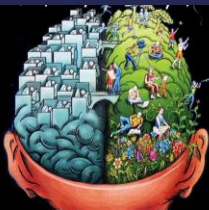


Instructions

- 1 point for every correct number.
- Numbers must be in the correct order.

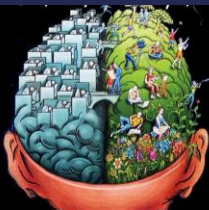
Check your letters

D A T N O L P I B R E Y C U G



TASK

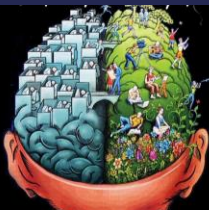
Try remembering the following string of letters. You have **10 seconds**.



TASK

Try remembering the following string of letters. You have **10 seconds**.

C A R D O G L I T P E N B U Y



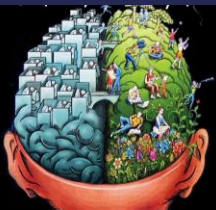
Chunking

24/06/2024



TASK

Try remembering the following string of letters. You have **10 seconds**.

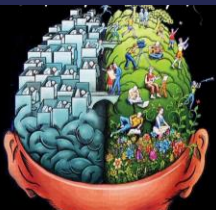


Instructions

- 1 point for every correct number.
- Numbers must be in the correct order.

Check your letters

C A R D O G L I T P E N B U Y

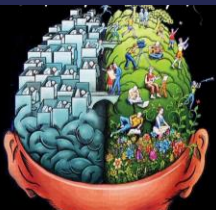


Chunking: Putting information together in a meaningful way allows us to expand our short term memory capacity.

Y E B N O I P D T A L G R C U

D A T N O L P I B R E Y C U G

C A R D O G L I T P E N B U Y





To bring to your first lesson...

24/06/2024



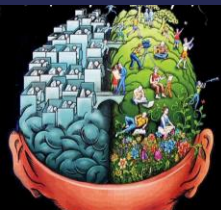
- Induction Tasks
- Pencil case – pen, pencil, calculator etc
- Whiteboard and pen

You will be given the following equipment:

- An A4 file
- A course and Department handbook - these should be kept in your file.
- Personal Learning Checklist Booklet

You will have access to the following:

- Dedicated Teams folder for Psychology which includes; extra curricula reading, Knowledge Organisers for revision, all lessons (particularly if you are absent)





Student Requirements:

24/06/2024

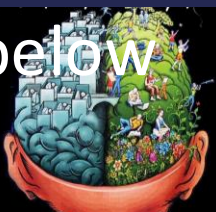


Items to be bought to every lesson:

- Pencil case – pen, pencil, calculator, whiteboard etc
- Psychology file with its contents!
- Textbook
- Concept Notes
- Exercise Book

Attendance:

- The starting point is that you are expected to attend 100% of your classes.
- **Poor attendance will result in a Post 16 referral.** If your attendance falls below 90% you are in danger of failing the course.



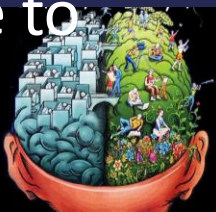


Independent Study

24/06/2024



- A vital and integral part of your course is the work you do outside of the classroom. As a rough guide, you should spend for every hour in class, up to an hour outside class on personal study. This should include:
 - Class work/homework assignments
 - Reviewing notes made in class
 - Researching key case studies
 - Preparing for class tests
 - Revision
- It is your responsibility to get the details of any homework set and completion dates if you miss a class. This will be displayed on MS teams
- **If you fail to hand in work**, you will receive a Post 16 referral. Continued failure to hand in work may result in you being asked to leave the course.
- Extensions may be granted for genuine reasons.



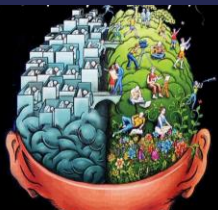


Concept Notes

24/06/2024



- Cornell Notes
- Set each week in ADVANCE of your lessons
- You MUST come to lessons with these notes
- Based on your learning



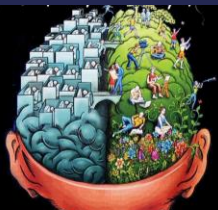


What now?

24/06/2024



- Complete the induction tasks – this will give you a better insight into the subject.
- To access your induction tasks go to the school website and click on 'Post 16' you should see 'Induction Task' in the drop down menu.
- New to the school? – email me for the tasks –
- finnie@heles.plymouth.sch.uk
- bennett@heles.plymouth.sch.uk
- Want the tasks as word documents? – email for the tasks – bennett@heles.plymouth.sch.uk



Year A-Level Course Structure		
Paper 1: Introductory topics in psychology YEAR 1 CONTENT	Paper 2: Psychology in context YEAR 1 & YEAR 2 CONTENT	Paper 3: Issues and options in psychology YEAR 2 CONTENT
What's assessed 1 Social influence 2 Memory 3 Attachment 4 Psychopathology	What's assessed 1 Approaches in psychology 2 Biopsychology 3 Research methods	What's assessed 1. Issues and debates in psychology Option 1: Gender Option 2: Schizophrenia Option 3: Forensic psychology
Assessed •• written exam: 2 hours •• 96 marks in total (33.3% of A-level)	Assessed •• written exam: 2 hours •• 96 marks in total (33.3% of A-level)	Assessed •• written exam: 2 hours •• 96 marks in total (33.3% of A-level)
Questions •• Section A: multiple choice, short answer and extended writing, 24 marks •• Section B: multiple choice, short answer and extended writing, 24 marks •• Section C: multiple choice, short answer and extended writing, 24 marks •• Section D: multiple choice, short answer and extended writing, 24 marks	Questions •• Section A: multiple choice, short answer and extended writing, 24 marks •• Section B: multiple choice, short answer and extended writing, 24 marks •• Section C: multiple choice, short answer and extended writing, 48 marks	Questions •• Section A: multiple choice, short answer and extended writing, 24 marks •• Section B: multiple choice, short answer and extended writing, 24 marks •• Section C: multiple choice, short answer and extended writing, 24 marks •• Section D: multiple choice, short answer and extended writing, 24 marks

Please find topic descriptions at the end of this powerpoint

