



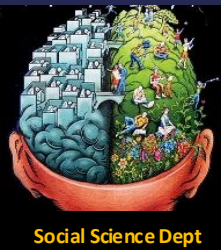
Post 16 Induction Day 2025

Welcome to Criminology

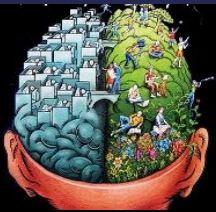
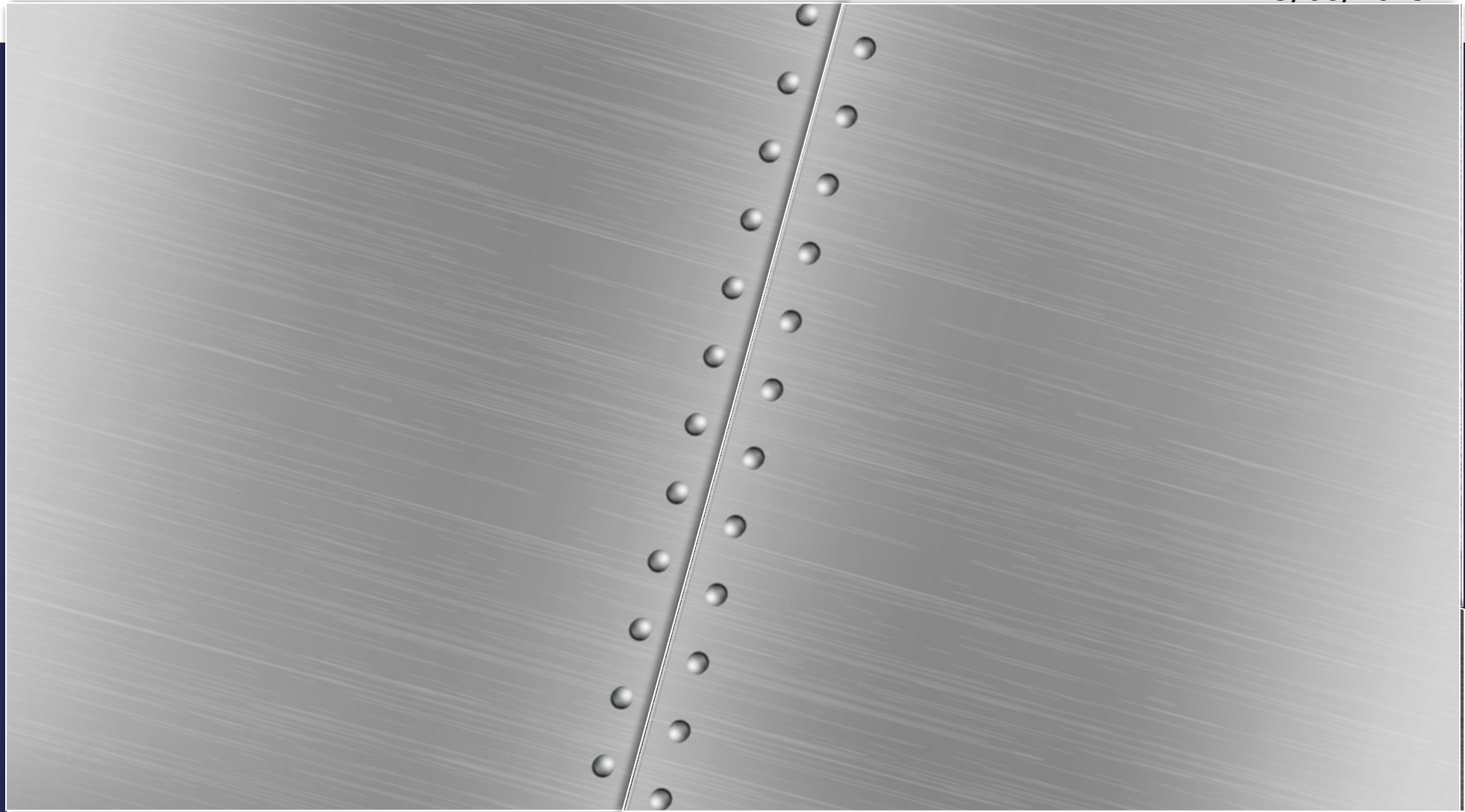
25/06/2025



WJEC Applied Diploma in Criminology



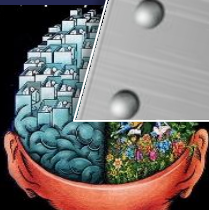
25/06/2025



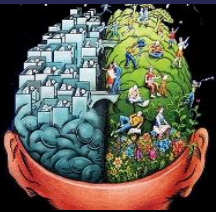
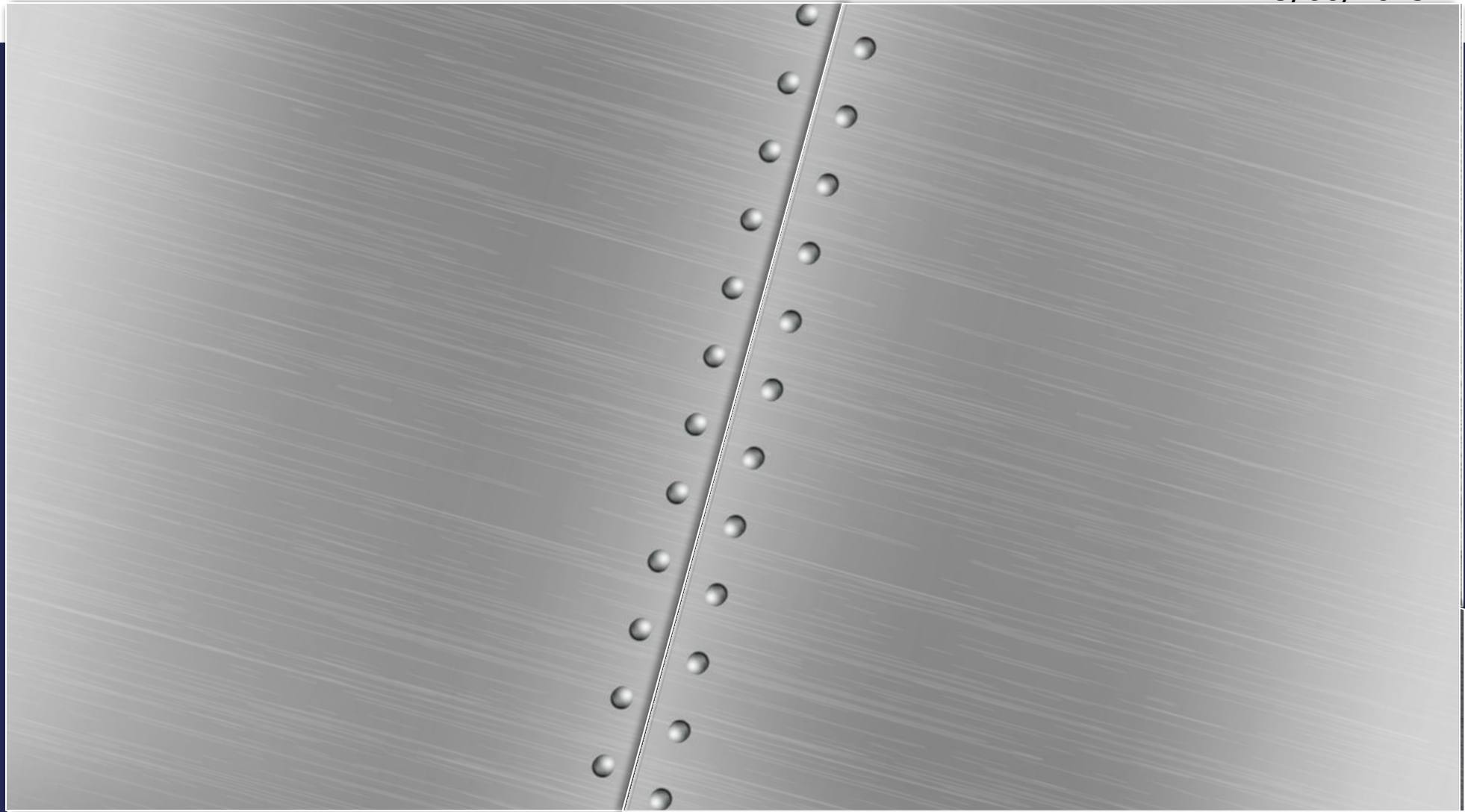
25/06/2020

WJEC LEVEL 3 CRIMINOLOGY

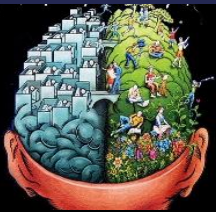
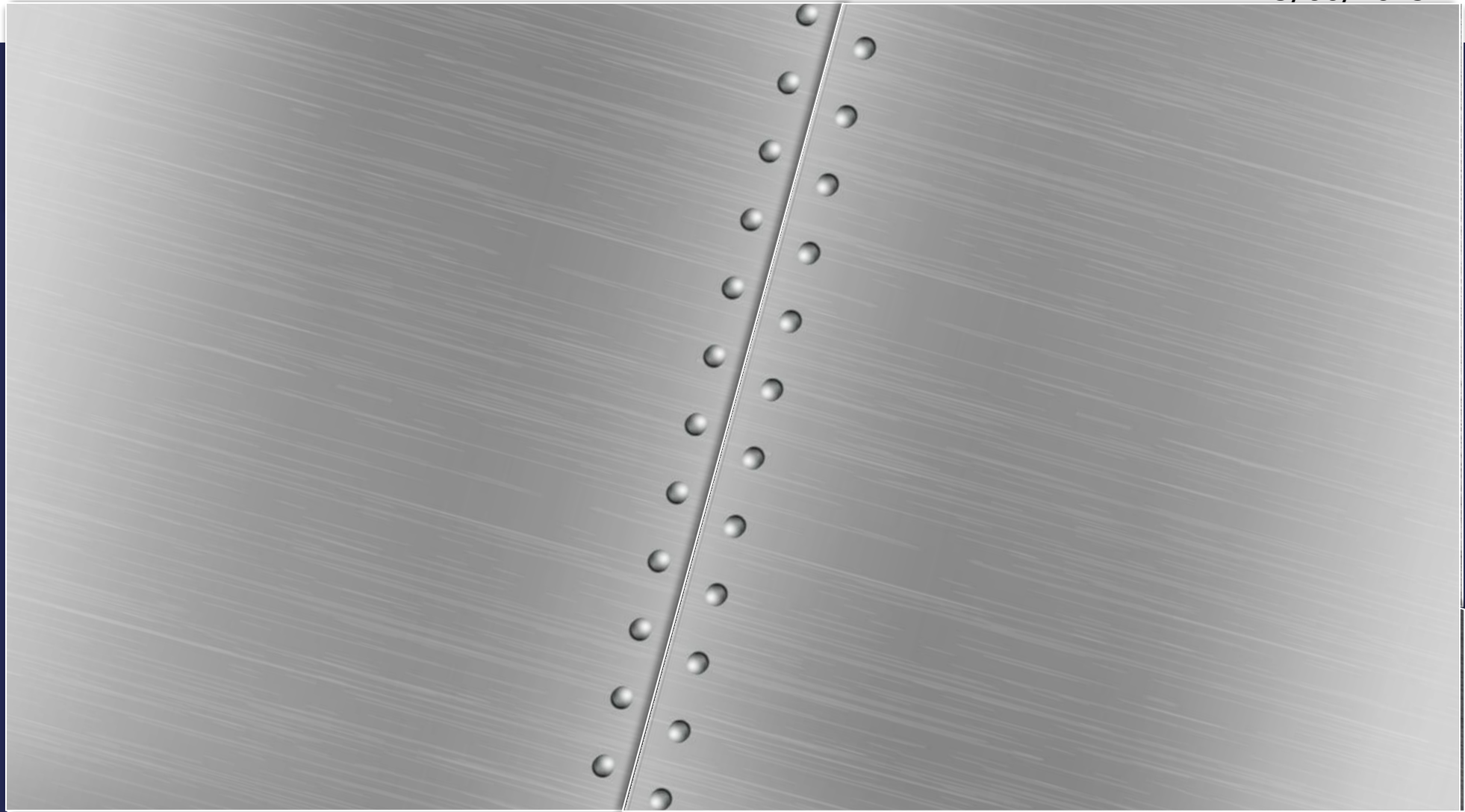
INTRODUCTION TO CRIMINOLOGY



25/06/2025



25/06/2025



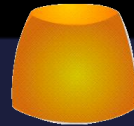
TASK 1

You have 5 minutes to look through your pack of cards as a group.

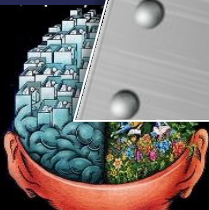
Place them into two piles:

- 1. Illegal (crime)**
- 2. Legal (not a crime)**

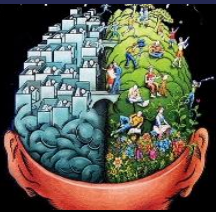
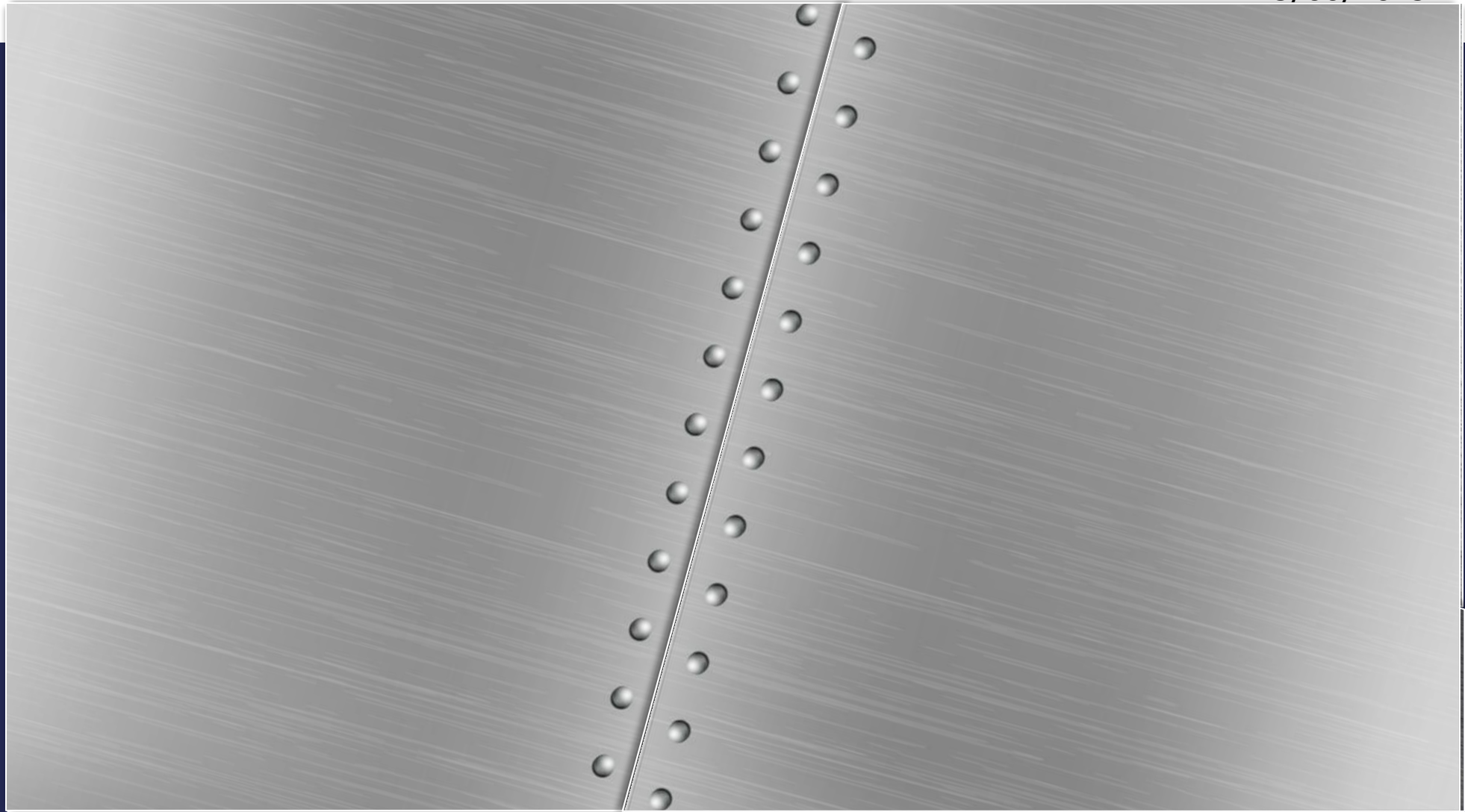
Make sure you can justify why you have placed them where you have.



TIME'S UP!

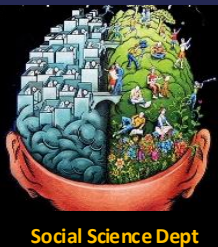


25/06/2025



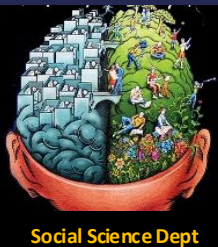
Name a card that you placed in your crime pile

1. How do you know it's a crime?
2. What about one in the non-crime pile?
3. How did you know it wasn't a crime?

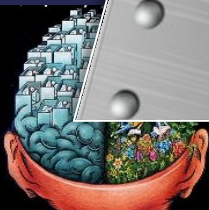


Name a card that you placed in your crime pile

1. How do you know it's a crime?
2. What about one in the non-crime pile?
3. How did you know it wasn't a crime?

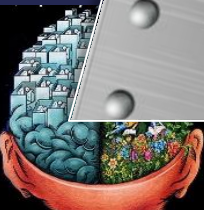


ANSWERS

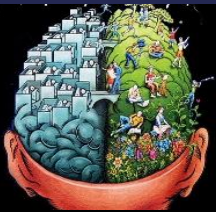
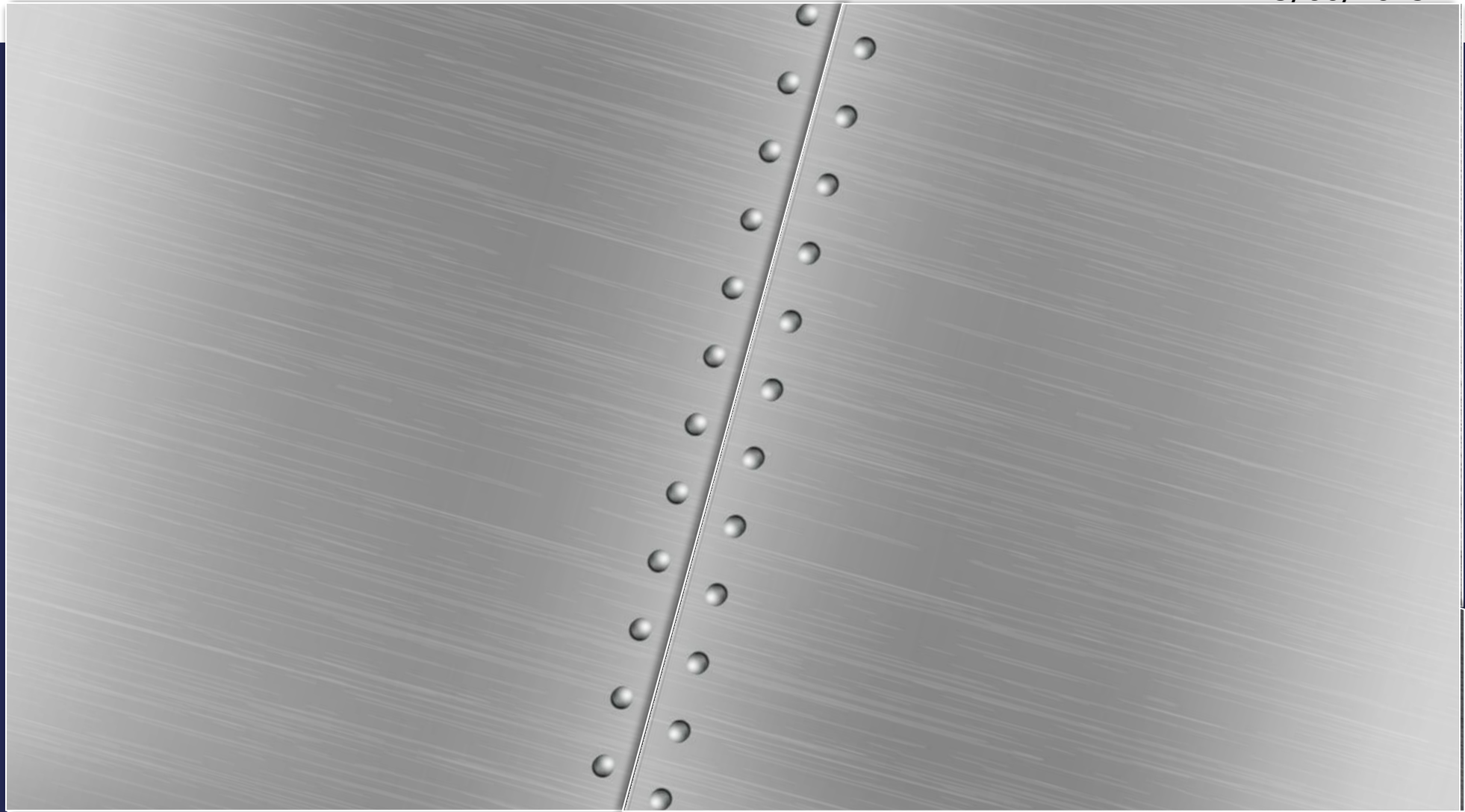


25/06/2020

ANSWERS



25/06/2025



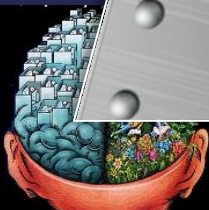
ANSWERS

ILLEGAL

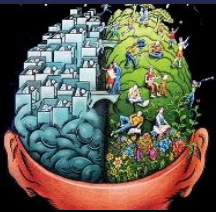
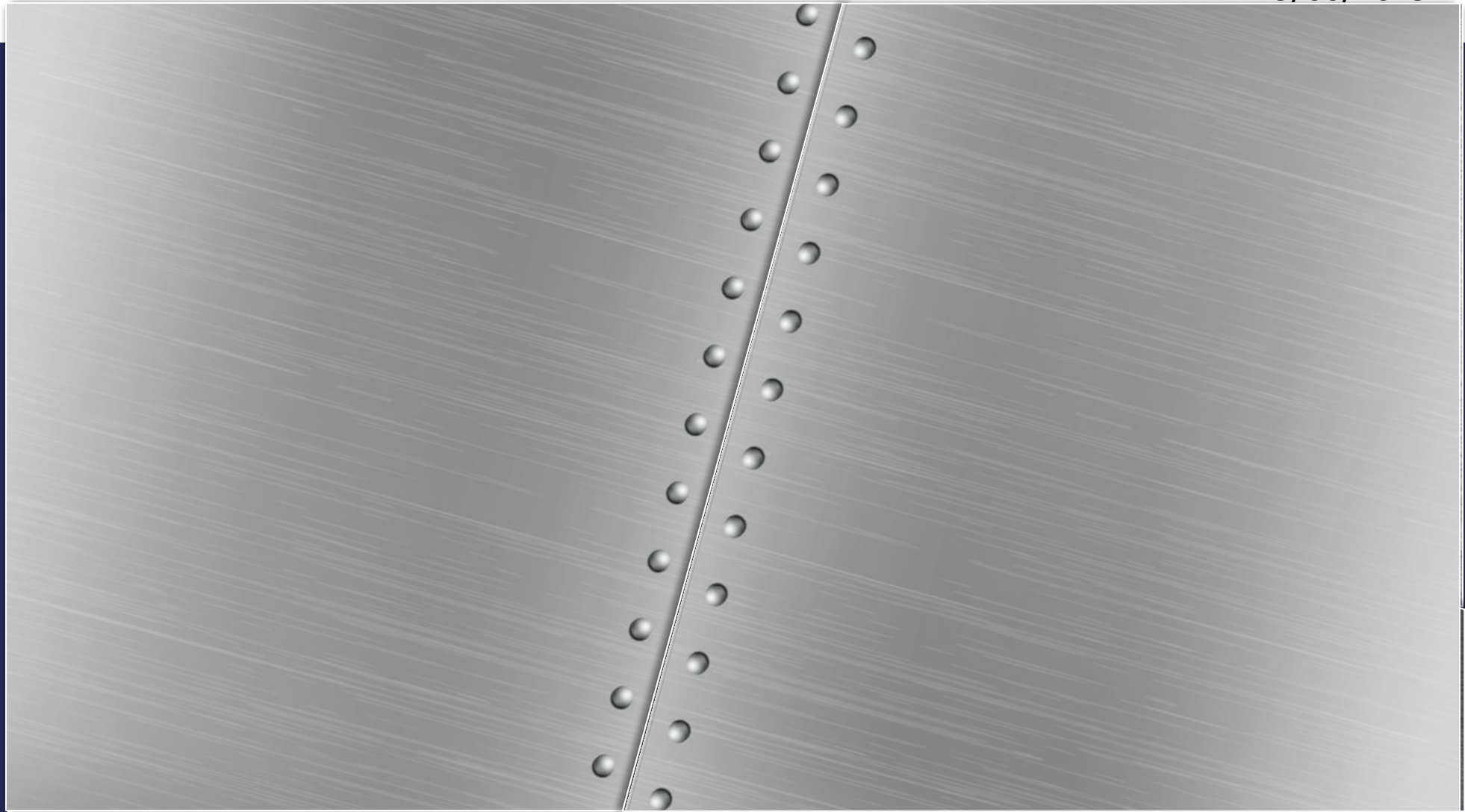
- Begging
- Internet fraud
- Cyberbullying
- Murder
- Death by dangerous driving
- Speeding
- Smoking cannabis
- Underage drinking
- Shoplifting
- Burglary
- Racism
- Criminal damage

LEGAL

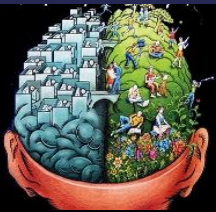
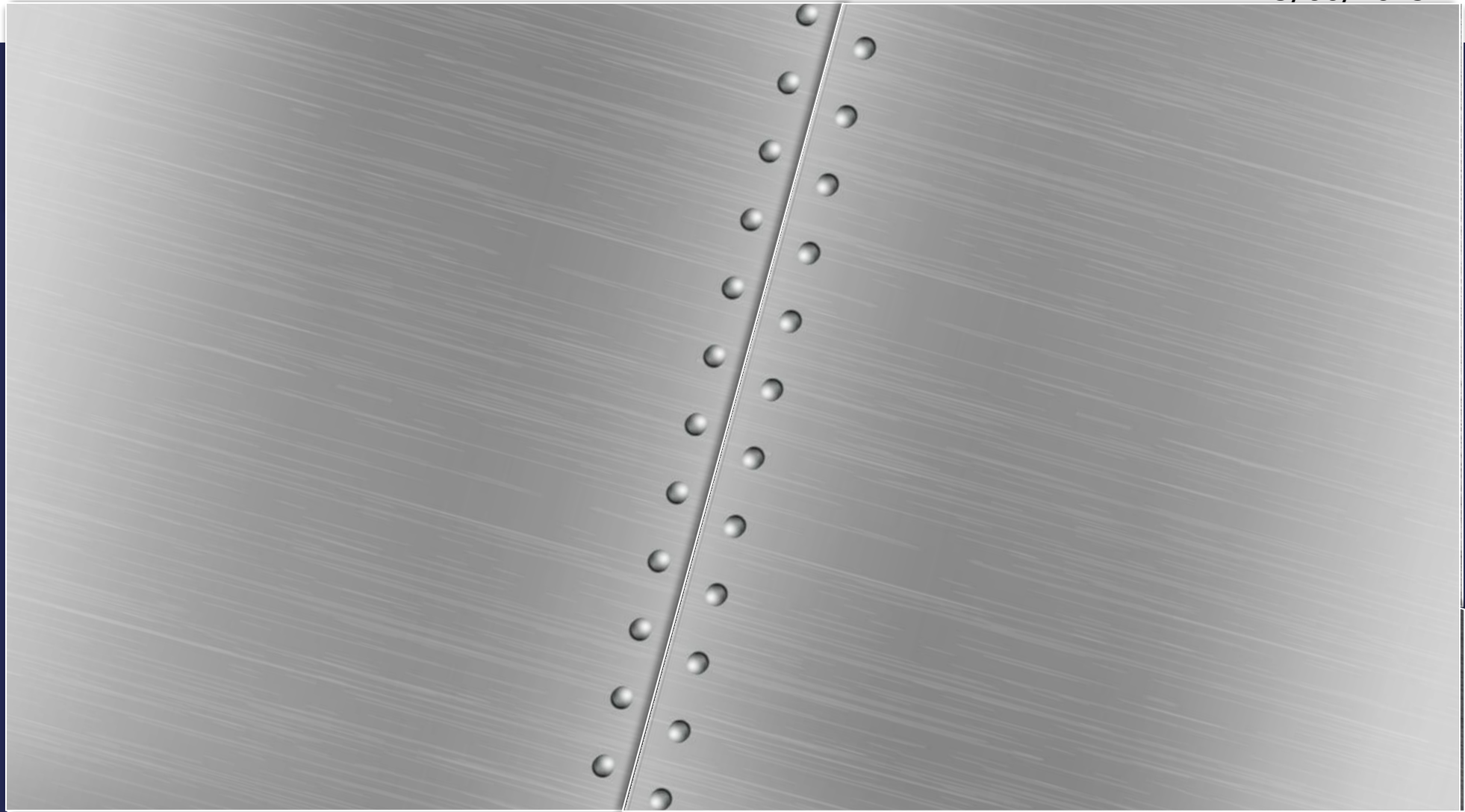
- Facial tattoos
- Adultery
- Trespassing
- 13 year old driving a tractor
- Owning an exotic pet



25/06/2025



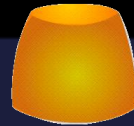
25/06/2025



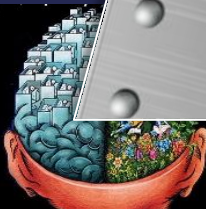
TASK 2

In your group, you have 3 minutes to rank all of the crime cards from most to least serious.

Be ready to share your reasons why.

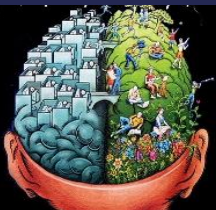


TIME'S UP!



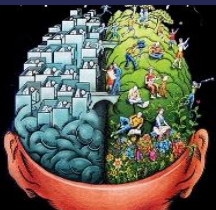
Discussion question

What are the 'top 5 crimes'?



Discussion question

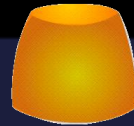
What are the 'top 5 crimes'?



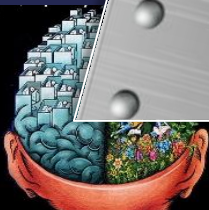
TASK 3

You have been given an extra set of cards; each card details a sentence for a crime.

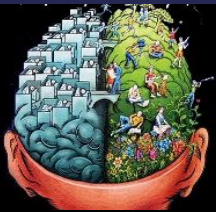
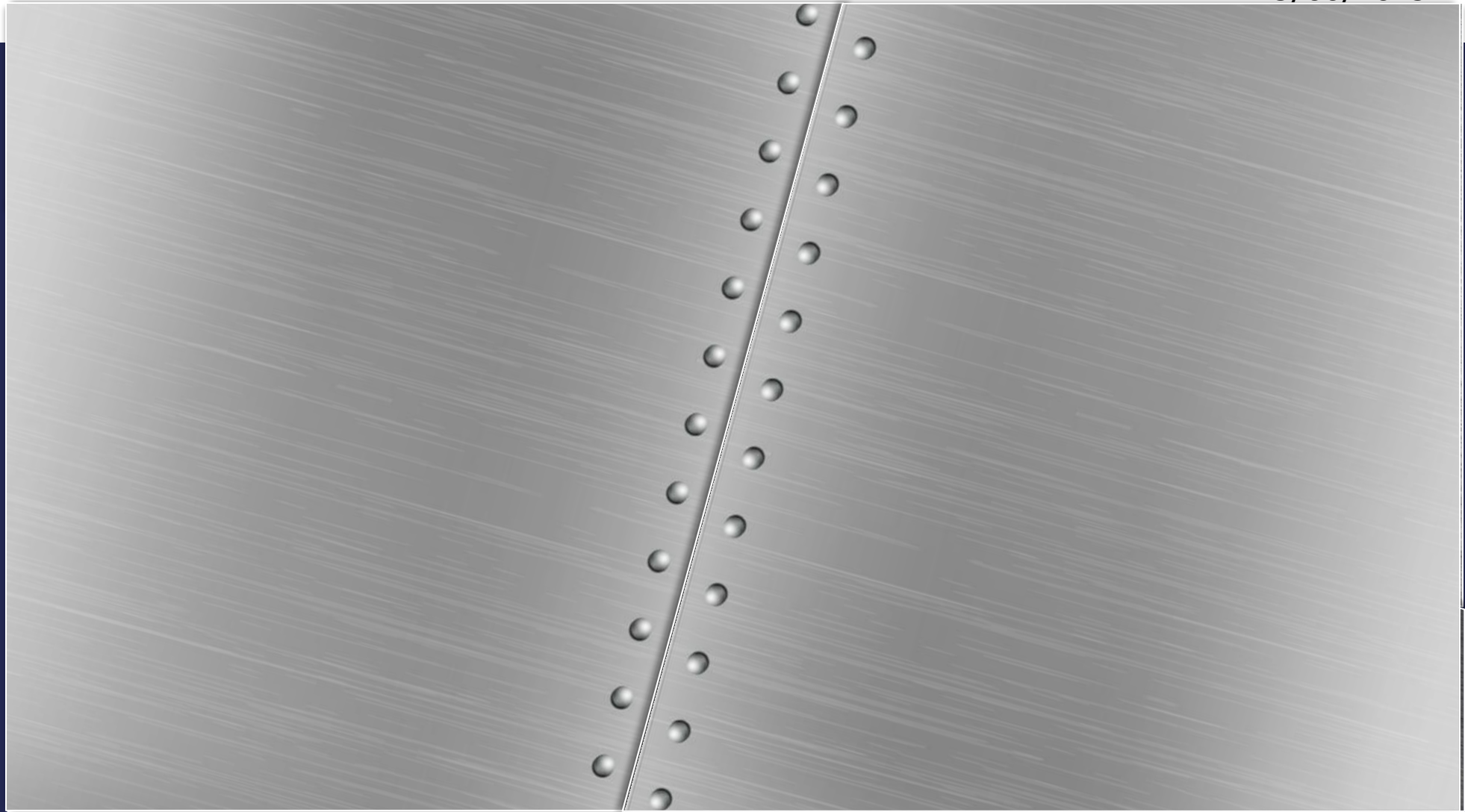
In your group, you have 3 minutes match the crime card to the sentence.



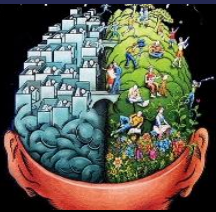
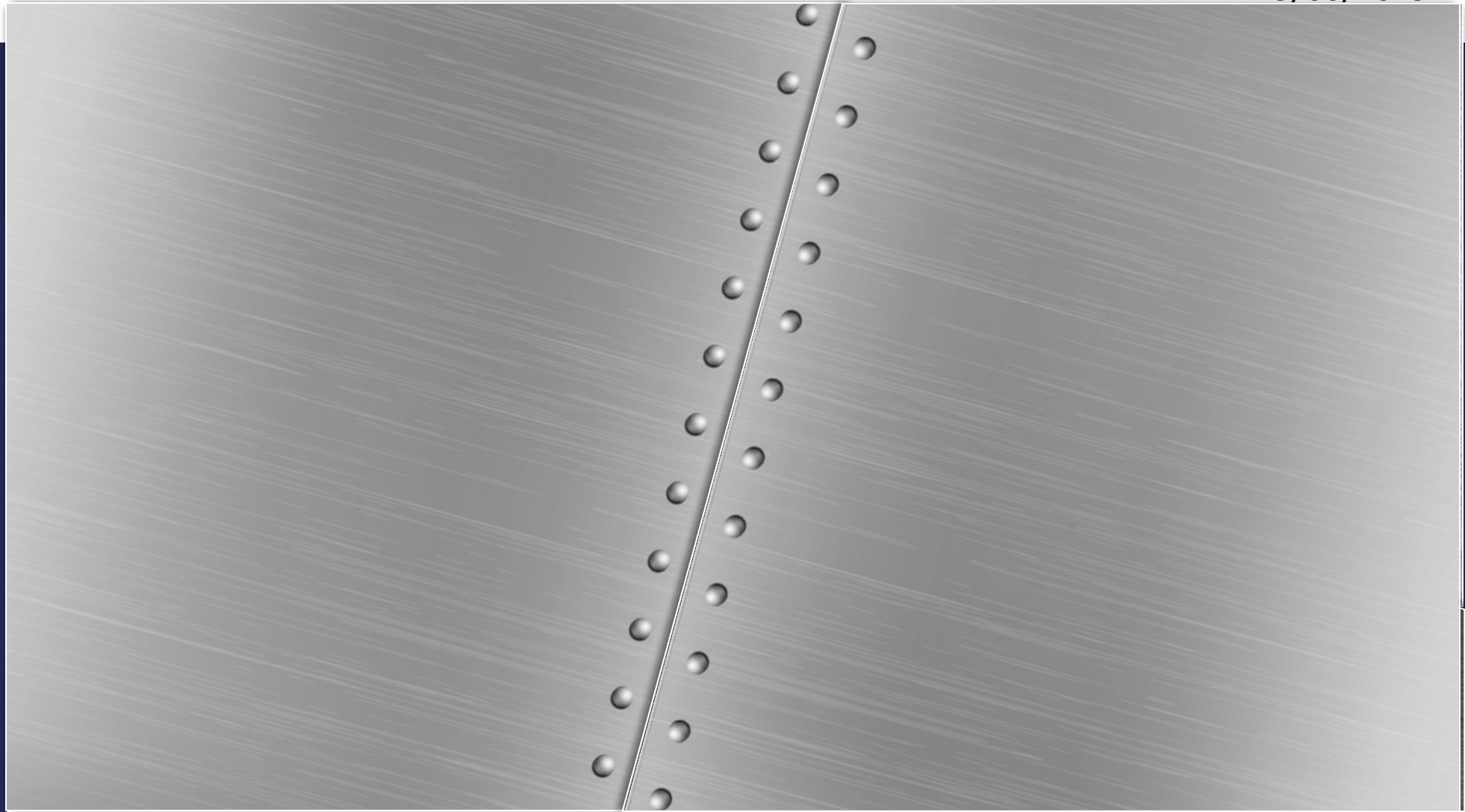
TIME'S UP!



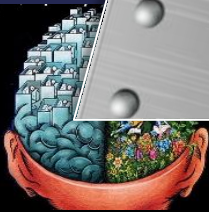
25/06/2025



25/06/2025



ANSWERS



ANSWERS

Murder – Life sentence

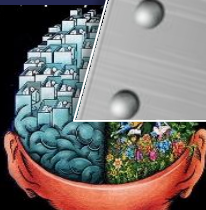
Burglary – 14 years imprisonment

Shop lifting - Fine/jailed for a maximum of 6 months

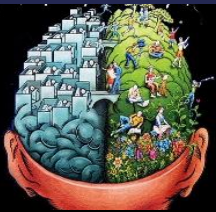
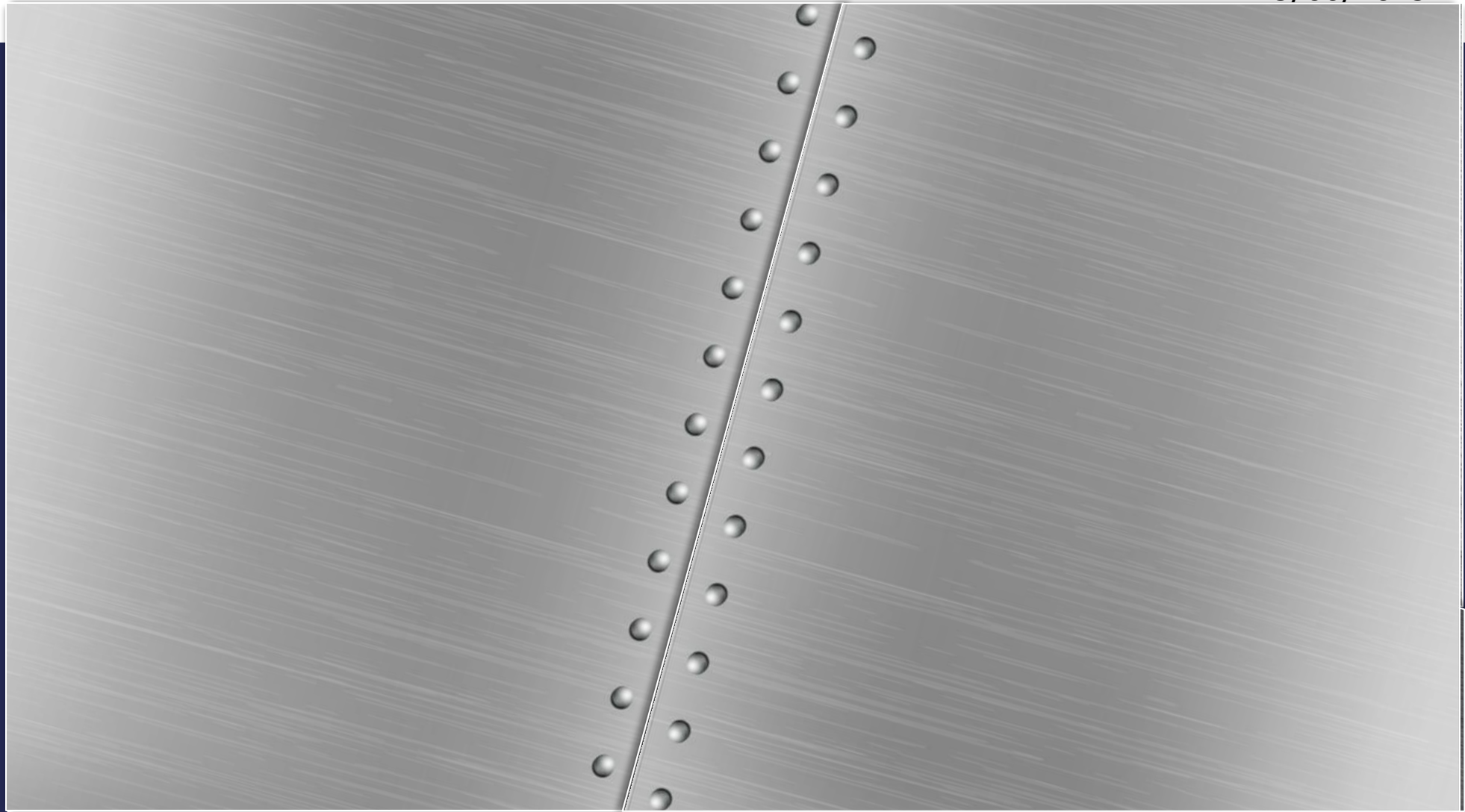
Begging – Maximum fine of £1000

Internet fraud – 10 years imprisonment

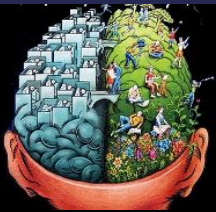
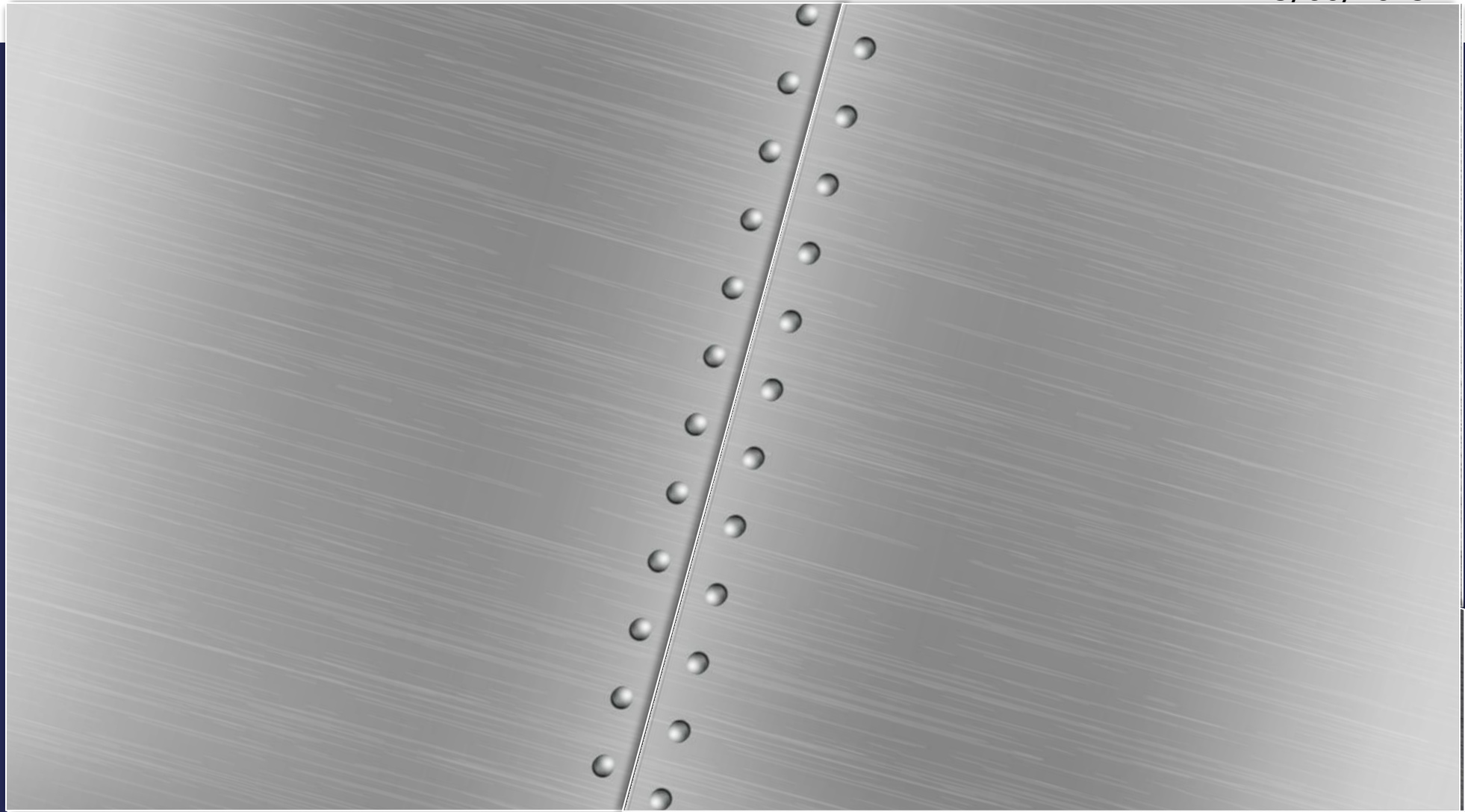
Cyberbullying – Up to 6 months imprisonment



25/06/2025



25/06/2025



ANSWERS

Death by dangerous driving – 14 years imprisonment

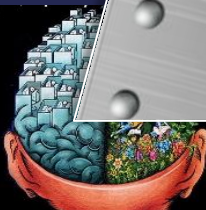
Speeding – A fine and points on license

Possession of a class A drug - Up to 5 years imprisonment

Underage drinking – Confiscation

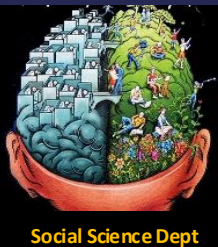
Racism – 7 years imprisonment

Criminal damage – Fine and 3 months imprisonment



Are there any crimes in your pack that you think should not be crimes? Why?

Are there any that you think deserve a higher sentence? Why?



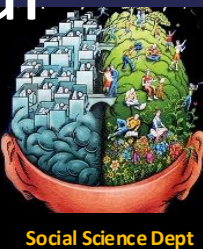


How do you become a good Criminologists?

25/06/2025



- How do you enrich your knowledge?
- Read, read and then read a bit more – Newspapers, your textbook, borrow books from the library
- Watch – TV News , documentaries, YouTube channels recommended to you by your teachers
- Listen – Radio programmes and podcasts recommended to you by your teachers
- Join in with extra curricular activities and clubs, the Social Science Department put on





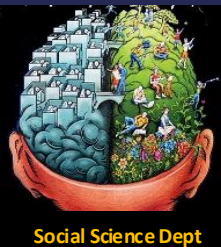
How do you become a good Criminologist?

25/06/2025



How do you think like a criminologist?

- Never assume anything
- There is more than one correct answer
- Be objective
- Think outside the box, and use your imagination
- Consider individual differences
- Follow the evidence
- Challenge the evidence



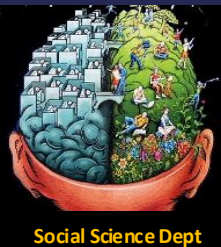


How do you become a good Criminologists?

25/06/2025



- How do you talk like a criminologist?
 - Ask questions
 - Ask even more questions
 - Use specialist vocabulary
 - Be objective
 - Use evidence
 - Don't stereotype
 - Don't use discriminatory language



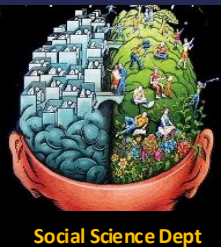


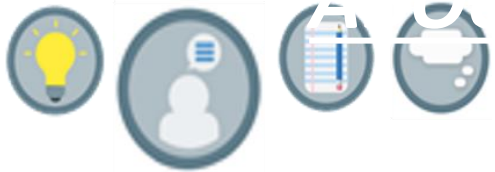
Course information

25/06/2025



- The course is run over two years
- Completion of Units 1 & 2 in Yr 12 will give you an Applied Certificate in Criminology.
- If you decide to continue with the course in year 13, you will complete Units 3&4.
- These will be combined with Units 1&2 to make the Applied Diploma in Criminology.



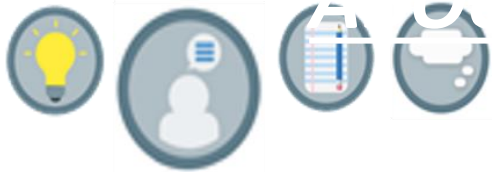


Course information

25/06/2025



| YEAR | Unit 1: | Unit 2: |
|------|--|---|
| 12 | Changing Awareness of Crime | Criminological Theories |
| | The first unit will enable the you to demonstrate understanding of different types of crime, influences on perceptions of crime and why some crimes are unreported | The second unit will allow you to gain an understanding of why people commit crime, drawing on what they have learned in Unit 1. |
| YEAR | Unit 3: | Unit 4 |
| 13 | Crime Scene to Courtroom | Crime and Punishment |
| | The third unit will provide an understanding of the criminal justice system from the moment a crime has been identified to the verdict. You will develop the understanding and skills needed to examine information in order to review the justice of verdicts in criminal | In the final unit, you will apply their understanding of the awareness of criminality, criminological theories and the process of bringing an accused to court in order to evaluate the effectiveness of social control to deliver criminal justice policy. |



Course information

25/06/2025



**YEAR
12**

Unit 1:

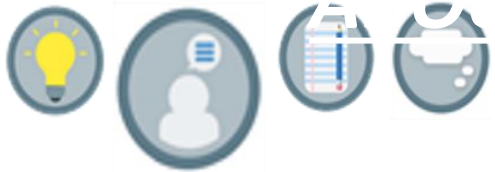
Changing Awareness of Crime

- Internal Controlled Assessment
- 8 Hours
- You can take in notes [these will be checked by your teacher]
- You can use the internet for some of the tasks.
- Graded: on a scale of A to E
- Spring term
- 50% of overall Certificate grade
- 25% of overall Diploma grade

Unit 2:

Criminological Theories

- 90-minute examination
- You are allowed resit opportunities; the highest grade will contribute towards the overall grade for the qualification
- Graded: on a scale of A to N
- 50% of overall Certificate grade
- 25% of overall Diploma grade



Course information

25/06/2025



YEAR

13

Unit 3:

Crime Scene to Courtroom

- Internal Controlled Assessment
- 8 Hours
- You can take in notes [these will be checked by your teacher]
- You cannot use the internet for some of the tasks.
- Graded: on a scale of A to E
- Autumn Term
- 25% of overall Diploma grade

Unit 4

Crime and Punishment

- 90-minute examination
- You are allowed a resit opportunities; the highest grade will contribute towards the overall grade for the qualification
- Graded: on a scale of A to N
- 25% of overall Diploma grade



To bring to your first lesson...

25/06/2025



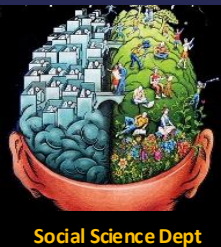
- Induction Tasks
- Pencil case – pen, pencil, calculator etc

You will be given the following equipment:

- An A4 file – we have some available for you to reuse
- Helpful documents for your time in Criminology
- Personal Learning Checklist for each topic
- Knowledge organisers

You will have access to the following:

- Dedicated Teams folder for Criminology which includes; extra curricula reading, Knowledge Organisers for revision, all lessons (particularly if you are absent)





Expectations

25/06/2025

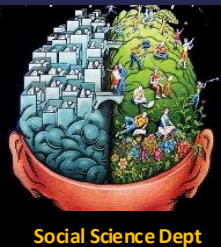


Items to be bought to every lesson:

- Pencil case – pen, pencil etc
- Criminology file with its contents!
- Exercise book
- White board and pen
- Textbook

Attendance:

- The starting point is that you are expected to attend 100% of your classes.
- **Poor attendance will result in a Post 16 referral.**
- If your attendance falls below 90% you are in danger of failing the course.





Independent Study

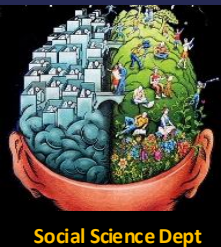
25/06/2025



- A vital and integral part of your course is the work you do outside of the classroom.
- As a rough guide, you should spend for every hour in class, up to an hour outside class on personal study.

- This should include:
 - Class work/homework assignments
 - Reviewing notes made in class
 - Researching key case studies
 - Preparing for class tests
 - Revision

- It is **your responsibility** to get the details of any homework set and completion dates if you miss a class.
This will be displayed on MS Teams
- **If you fail to hand in work**, you will receive a Post 16 referral.
- Continued failure to hand in work may result in you being asked to leave the course.
- Extensions may be granted for **genuine** reasons.





What now?

25/06/2025



- Complete the induction tasks – this will give you a better insight into the subject.
- To access your induction tasks go to the school website and click on 'Post 16' you should see 'Induction Task' in the drop down menu.
- Visit the [WJEC](https://www.wjec.co.uk) website to look at the specification
- New to the school? – email us for the tasks –
bennett@heles.plymouth.sch.uk
- Want the tasks as word documents? – email for the tasks –
bennett@heles.plymouth.sch.uk

