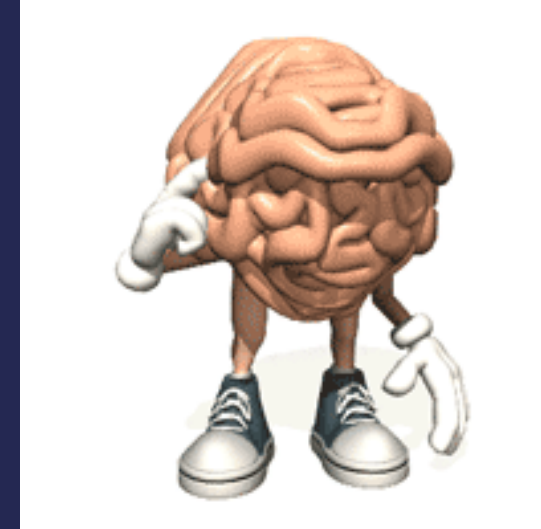


25/06/2025

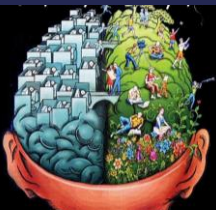


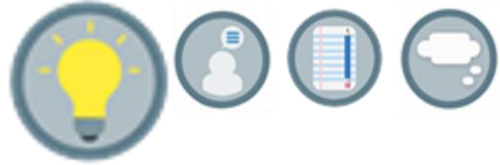
Post 16 Induction Day

Welcome to Psychology



A-Level Psychology With Ms Bennett

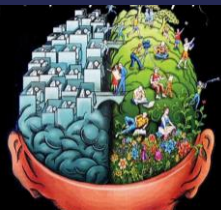




25/06/2025

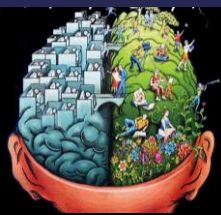
TPS: What is Psychology?

Discuss your ideas with the person sitting beside you





25/06/2025





25/06/2025



Psychology is the scientific study of the mind and behaviour

But what is behaviour?

Behaviour refers to any observable action made by a living person or animal. It is best described as any kind of response that can actually be seen and measured. It does not mean actions or attitudes that can be inferred.



What is the Mind?

Refers to experiences or the mental processes and experiences that cannot be directly observed.

- any response that is internal or hidden from view and cannot be directly observed

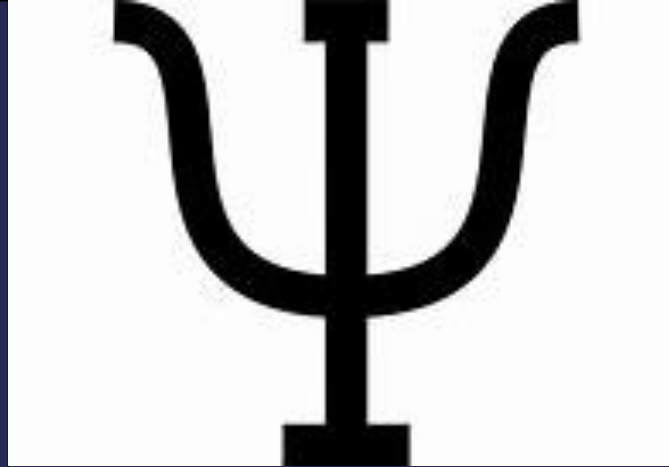
Psychology relies on inferences, or assumptions, about underlying processes on the basis of observable behaviour.



Origins/Etymology

Definition

'the scientific study of the human mind and its functions, especially those affecting behaviour in a given context.'



From

1650s, "the study of the soul," from Modern Latin *psychologia*, probably coined mid-16c. in Germany by Melanchthon from Latinized form of Greek *psychē* "breath, spirit, soul" (see [psyche](#)) + *logia* "study of" (see [-logy](#))

Word Family

Psychologies

Psych

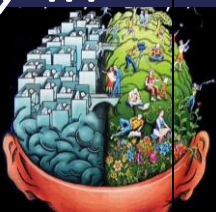
Psychologist

Psychological

Psychology

Examples

'She studied *psychology* in college'



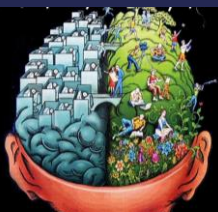


How do we explain behaviour?

25/06/2025



- In pairs, choose a piece of behaviour and try to explain it. E.g Laughing, spitting, humming etc
- Why does this behaviour happen? Why could it happen?
- An approach is a point of view in psychology. The approaches suggest different things are most influential in human behaviour.
- There are 6 main approaches we look at:
 - Biological approach & Evolutionary approach
 - Cognitive approach
 - Behavioural approach
 - Social Learning theory
 - Psychodynamic approach
 - Humanistic approach



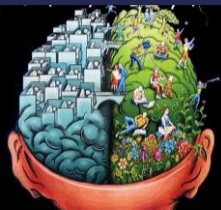


ABOUT THIS COURSE

25/06/2025



Psychology Yr 12	Issues and Debates Research Methods Approaches in Psychology Memory Attachment Clinical Psychology and Mental Health
Psychology Yr 13	Biopsychology Social Influence Schizophrenia Forensic Psychology Gender



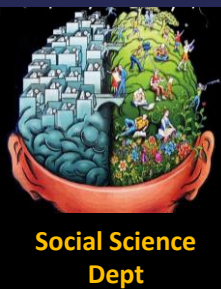


What can YOU do to enhance your course?

25/06/2025



- Read, read and then read a bit more – Newspapers, your textbook, borrow books from the library
- Watch – TV News , documentaries, YouTube channels recommended to you by your teachers
- Listen – Radio programmes and podcasts recommended to you by your teachers
- Join in with extra curricular activities and clubs, the Social Science Department put on



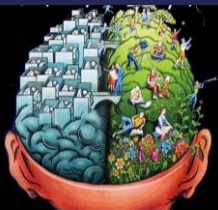


What does it mean for students to *think* like a Psychologist?

25/06/2025



- Never assume anything
- There is more than one correct answer
- Be objective
- Think outside the box, and use your imagination
- Consider individual differences
- Follow the evidence
- Challenge the evidence



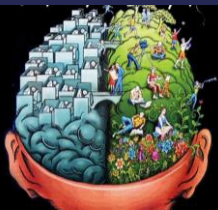


What does it mean for students to *talk* like a Social Scientist?

25/06/2025



- Ask questions
- Ask even more questions
- Use specialist vocabulary
- Be objective
- Use evidence
- Don't stereotype
- Don't use discriminatory language



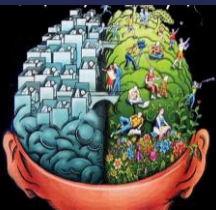


Practice

25/06/2025

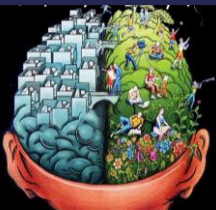


Let's test your memory!



TASK

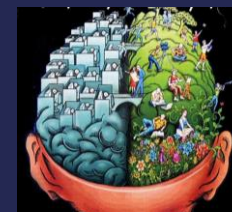
Try remembering the following string of letters. You have **10 seconds**.



TASK

Try remembering the following string of letters. You have **10 seconds**.

Y E B N O I P D T A L G R C U



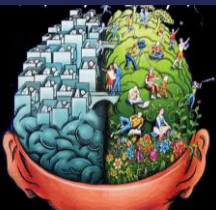
Chunking

25/06/2025



TASK

Try remembering the following string of letters. You have **10 seconds**.

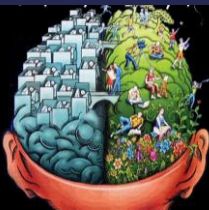


Instructions

- 1 point for every correct number.
- Numbers must be in the correct order.

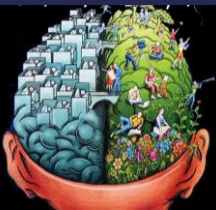
Check your letters

Y E B N O I P D T A L G R C U



TASK

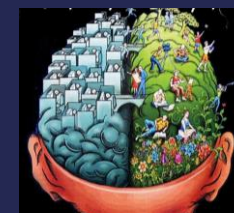
Try remembering the following string of letters. You have **10 seconds**.



TASK

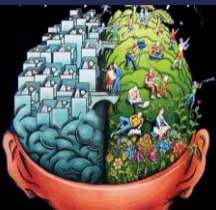
Try remembering the following string of letters. You have **10 seconds**.

D A T N O L P I B R E Y C U G



TASK

Try remembering the following string of letters. You have **10 seconds**.

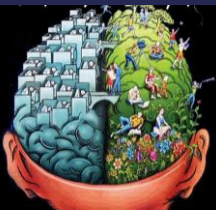


Instructions

- 1 point for every correct number.
- Numbers must be in the correct order.

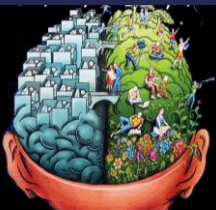
Check your letters

D A T N O L P I B R E Y C U G



TASK

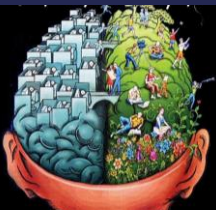
Try remembering the following string of letters. You have **10 seconds**.



TASK

Try remembering the following string of letters. You have **10 seconds**.

C A R D O G L I T P E N B U Y



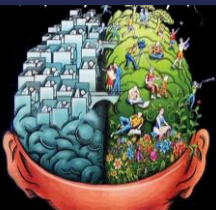
Chunking

25/06/2025



TASK

Try remembering the following string of letters. You have **10 seconds**.

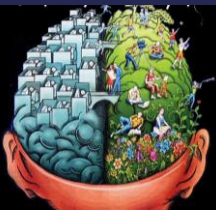


Instructions

- 1 point for every correct number.
- Numbers must be in the correct order.

Check your letters

C A R D O G L I T P E N B U Y

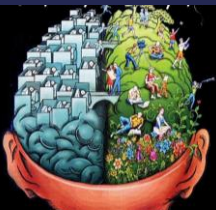


Chunking: Putting information together in a meaningful way allows us to expand our short term memory capacity.

Y E B N O I P D T A L G R C U

D A T N O L P I B R E Y C U G

C A R D O G L I T P E N B U Y





To bring to your first lesson...

25/06/2025



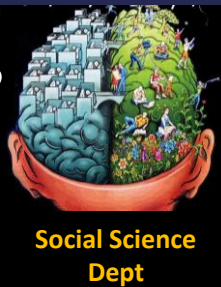
- Induction Tasks
- Pencil case – pen, pencil, calculator etc

You will be given the following equipment:

- An A4 file – we have some available for you to reuse
- Helpful documents for your time in Criminology
- Personal Learning Checklist for each topic
- Knowledge organisers

You will have access to the following:

- Dedicated Teams folder for Criminology which includes; extra curricula reading, Knowledge Organisers for revision, all lessons (particularly if you are absent)





Expectations

25/06/2025

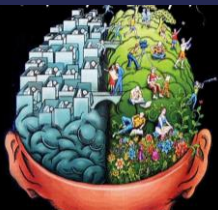


Items to be bought to every lesson:

- Pencil case – pen, pencil etc
- Criminology file with its contents!
- Exercise book
- White board and pen
- Textbook

Attendance:

- The starting point is that you are expected to attend 100% of your classes.
- **Poor attendance will result in a Post 16 referral.**
- If your attendance falls below 90% you are in danger of failing the course.



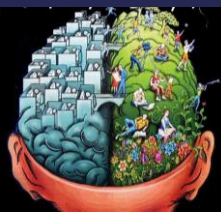


Independent Study

25/06/2025



- A vital and integral part of your course is the work you do outside of the classroom.
- As a rough guide, you should spend for every hour in class, up to an hour outside class on personal study.
- This should include:
 - Class work/homework assignments
 - Reviewing notes made in class
 - Researching key case studies
 - Preparing for class tests
 - Revision
- It is **your responsibility** to get the details of any homework set and completion dates if you miss a class. This will be displayed on MS Teams
- **If you fail to hand in work**, you will receive a Post 16 referral.
- Continued failure to hand in work may result in you being asked to leave the course.
- Extensions may be granted for **genuine** reasons.



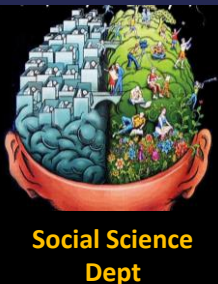


What now?

25/06/2025



- Complete the induction tasks – this will give you a better insight into the subject.
- To access your induction tasks go to the school website and click on 'Post 16' you should see 'Induction Task' in the drop down menu.
- Visit the [AQA](#) website to look at the specification
- New to the school? – email us for the tasks –
- finnie@heles.plymouth.sch.uk
- bennett@heles.plymouth.sch.uk
- Want the tasks as word documents? – email for the tasks – bennett@heles.plymouth.sch.uk





Year A-Level Course Structure

Paper 1: Introductory topics in psychology
YEAR 1 CONTENT

Paper 2: Psychology in context
YEAR 1 & YEAR 2 CONTENT

Paper 3: Issues and options in psychology
YEAR 2 CONTENT

What's assessed

1 Social influence

2 Memory

3 Attachment

4 Clinical Psychology and Mental Health

What's assessed

1 Approaches in psychology

2 Biopsychology

3 Research methods

What's assessed

1. Issues and debates in psychology

Option 1: Gender

Option 2: Schizophrenia

Option 3: Forensic psychology



25/06/2025



Year A-Level Course Structure

Paper 1: Introductory topics in psychology YEAR 1 CONTENT

Paper 2: Psychology in context YEAR 1 & YEAR 2 CONTENT

Paper 3: Issues and options in psychology YEAR 2 CONTENT

Assessed

- written exam: 2 hours
- 96 marks in total (33.3% of A-level)

Assessed

- written exam: 2 hours
- 96 marks in total (33.3% of A-level)

Assessed

- written exam: 2 hours
- 96 marks in total (33.3% of A-level)

Questions

- Section A: multiple choice, short answer and extended writing, 24 marks
- Section B: multiple choice, short answer and extended writing, 24 marks
- Section C: multiple choice, short answer and extended writing, 24 marks
- Section D: multiple choice, short answer and extended writing, 24 marks

Questions

- Section A: multiple choice, short answer and extended writing, 24 marks
- Section B: multiple choice, short answer and extended writing, 24 marks
- Section C: multiple choice, short answer and extended writing, 48 marks

Questions

- Section A: multiple choice, short answer and extended writing, 24 marks
- Section B: multiple choice, short answer and extended writing, 24 marks
- Section C: multiple choice, short answer and extended writing, 24 marks
- Section D: multiple choice, short answer and extended writing, 24 marks